



**alpine-property**

Alpine Property SAS au capital de 3 450 € - RCS Thonon les Bains 508 578 556 - siège: 153 chemin du Chargeau, 74110 Morzine, France - Titulaire de la Carte Professionnelle n° CPI 7401 2016 000 017 391 délivrée par la CCI de la Haute Savoie

Tel: +44 (0)208 123 2384

Email: [info@alpine-property.com](mailto:info@alpine-property.com)

Web: [www.alpine-property.com](http://www.alpine-property.com)

# Chalet Trefle

**Les Contamines Montjoie, Les Contamines, Mont Blanc**

**550 000 €uros**



## Contact

Contact **Sarah Watts** about this property.

**Tel:** +33 6 01 75 76 38

**Email:** [sarah@alpine-property.com](mailto:sarah@alpine-property.com)

# Key Features

|                                 |                         |
|---------------------------------|-------------------------|
| <b>Price</b>                    | 550 000 Euros           |
| <b>Status</b>                   | UNDER CONTRACT          |
| <b>Last updated</b>             | 06/09/2017              |
| <b>Area</b>                     | Mont Blanc              |
| <b>Location</b>                 | Les Contamines          |
| <b>Village</b>                  | Les Contamines Montjoie |
| <b>Bedrooms</b>                 | 6                       |
| <b>Bathrooms</b>                | 1                       |
| <b>Floor area</b>               | 100 m <sup>2</sup>      |
| <b>Land area</b>                | 848 m <sup>2</sup>      |
| <b>Detached</b>                 | Yes                     |
| <b>Heating</b>                  | Electric radiators      |
| <b>Ski access</b>               | Ski bus                 |
| <b>Nearest skiing</b>           | 1.5 km                  |
| <b>Nearest shops</b>            | 790 m                   |
| <b>Garden</b>                   | Yes                     |
| <b>Garage</b>                   | Single                  |
| <b>Drainage</b>                 | Septic tank             |
| <b>Energy efficiency rating</b> | TBC                     |
| <b>CO2 emissions</b>            | TBC                     |
| <b>Agency fees</b>              | Paid by the seller      |

## Property Description

Chalet Trefle is a 4(+2) bedroom chalet in Les Contamines. Set just outside the main centre, it is possible to stroll into the village in a few minutes. The ski bus is within easily reach and the bus takes you to the ski lifts in a couple of minutes.

It is set on a sizeable piece of land with fabulous views towards the mountains and glaciers all around. It has recently had a new roof, been fully rewired, had outside rendering and new external wood and insulation added as well as some internal improvements such as increased floor insulation and a hot water tank.

It is laid out as follows:

Middle level - around 100m<sup>2</sup>

Entrance hallway with cupboard.

Living space with fitted kitchen area and dining space. Lounge with an open fireplace. Access to a large balcony/terrace which is large enough to accommodate a dining table and chairs,  
Separate WC.

4 good sized bedrooms.

Newly renovated family bathroom with sink, bath with shower and WC.

Upper level - around 65m<sup>2</sup>

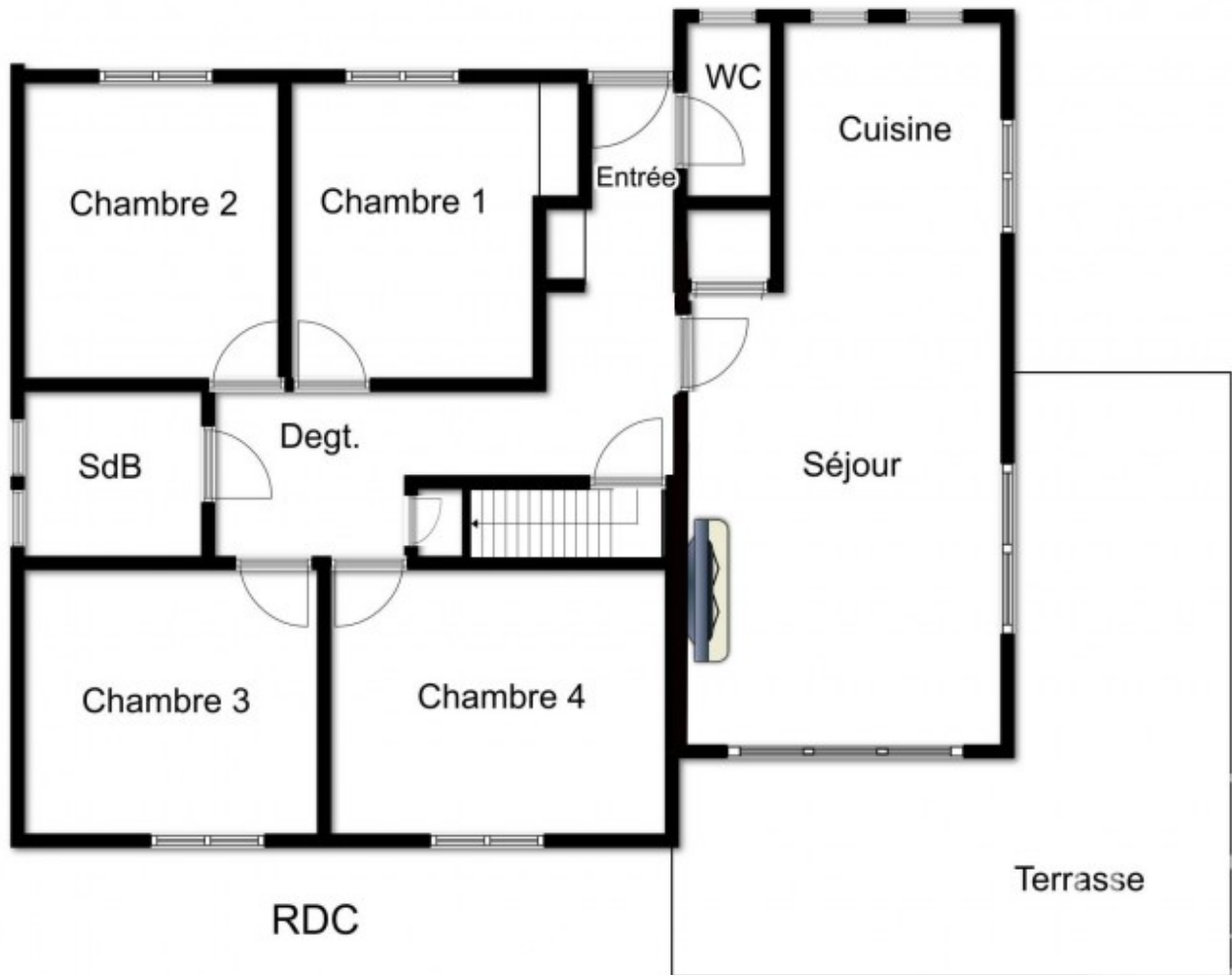
Two spacious attic bedrooms under the eaves (not full head height), but perfect for a kid's TV snug or extra sleep capacity.

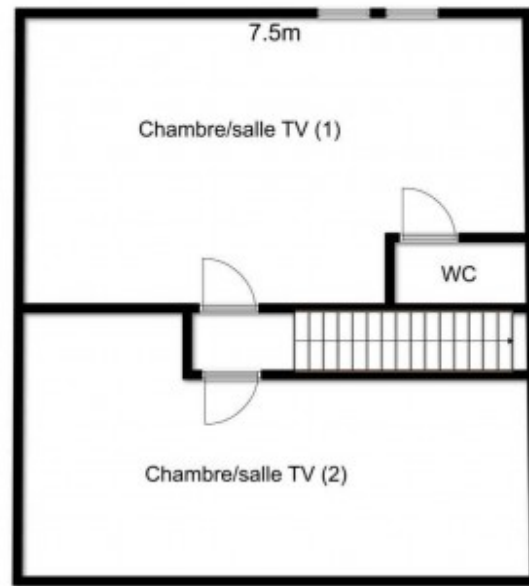
WC and sink in one of the rooms.

Lower level

Garage and technical rooms.

There is ample space here that could be further developed.





Combles

