



alpine-property

Alpine Property SAS au capital de 3 450 € - RCS Thonon les Bains 508 578 556 - siège: 153 chemin du Chargeau, 74110 Morzine, France - Titulaire de la Carte Professionnelle n° CPI 7401 2016 000 017 391 délivrée par la CCI de la Haute Savoie

Tel: +44 (0)208 123 2384

Email: info@alpine-property.com

Web: www.alpine-property.com

Appt. Takian

Montriond, Morzine, Portes Du Soleil

497 000 €uros



Contact

Contact **Marie-Anne Denicolo** about this property.

Tel: +33 6 08 15 46 54

Email: marieanne@alpine-property.com

Key Features

| | |
|---------------------------------|---------------------|
| Price | 497 000 Euros |
| Status | UNDER CONTRACT |
| Last updated | 19/03/2024 |
| Area | Portes Du Soleil |
| Location | Morzine |
| Village | Montriond |
| Bedrooms | 3 |
| Bathrooms | 2 |
| Floor area | 40.7 m ² |
| Heating | Underfloor heating |
| Nearest skiing | 1 km |
| Nearest shops | 1 km |
| Garage | Covered parking |
| Drainage | Mains drains |
| Number of lots | 9 |
| Procédure en cours | No |
| Energy efficiency rating | G (502) |
| CO2 emissions | C (27) |
| Agency fees | Paid by the seller |

Property Description

A must-see apartment located on the outskirts of Morzine where it joins the village of Montriond, and just a few minutes' walk from the centre of both villages.

Renovated in 2017 and situated on the top floor of the residence, this apartment offers a total area of 55.80m², with 3 bedrooms.

The property comprises an entrance, an open kitchen to a living/dining area with access to a balcony offering beautiful views of the Pleney and the Roc d'Enfer, 3 bedrooms including one ensuite, and a second shower room with wc.

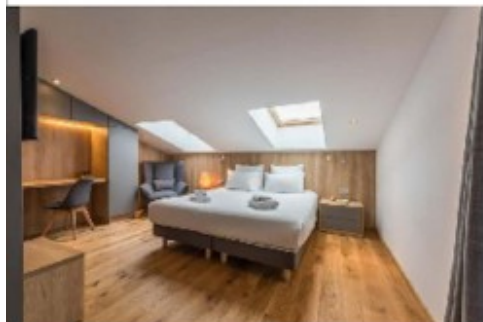
A covered parking space and a ski room with boot dryer are also included.

The apartment is sold fully furnished and equipped, allowing you to settle in immediately - the perfect pied-à-terre to enjoy all the activities of Morzine/Montriond, both in summer and winter!

The property is covered by the copropriété rules.

497 000 € TTC

ES Residence



R+2



Niveau: R+2

Orientation: Nord Est

Sud Ouest

APARTMENT B5

| | |
|--------------------------------|----------|
| CUISINE / SEJOUR | 18,53 m2 |
| CH.1 | 5,45 m2 |
| SDE 1 | 1,51 m2 |
| CH.2 | 9,29 m2 |
| SDE 2 | 2,15 m2 |
| CH.3 | 3,74 m2 |
| Surface Totale Logement Carrez | 40,67 m2 |
| m2 <1,8m | 30,00 m2 |
| TERRASSE | 6,00 m2 |
| Total Surface Ponderee | 55,50 m2 |









